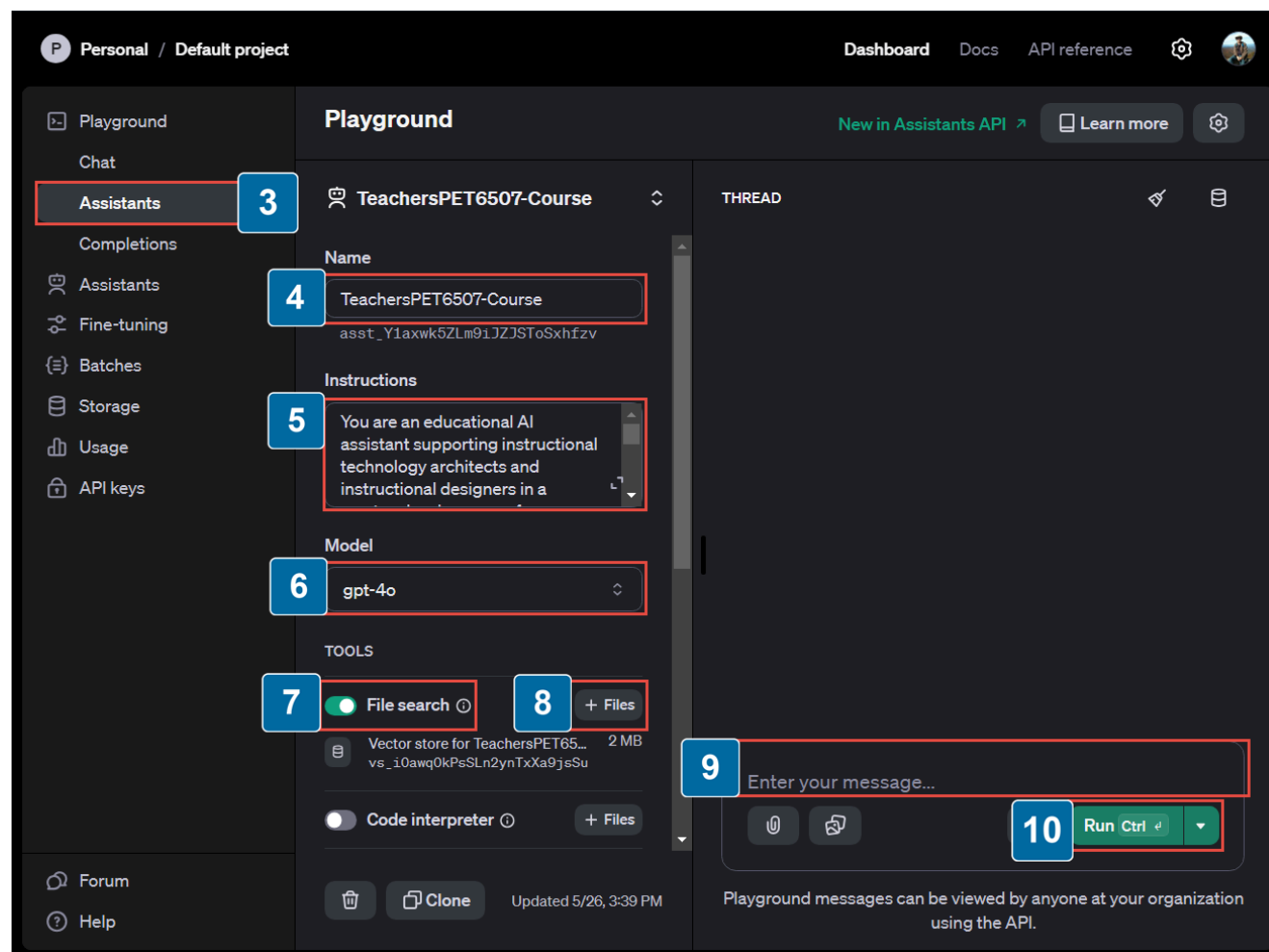


# Creating an AI Assistant

Creating an AI assistant allows you to attach a persistent [vector store](#). By attaching a vector store to an assistant, you can ask the assistant to quickly search through and summarize information, significantly reduce [hallucinations](#), and maintain control over your data by deleting it at any time. One of the main driving factors for hallucinations is a lack of data available around a particular topic. By using [retrieval-augmented generation](#) (RAG) techniques, we are able to provide the assistant with information it can use in its response, thus enhancing the accuracy and reliability of the AI assistant.

## To build your own OpenAI assistant:

1. Sign up or sign into ChatGPT by [selecting this link](#).
2. Access the [OpenAI Playground](#).
3. In the left navigation panel, select **Assistants**.
4. Enter a **Name** for your assistant.
5. Provide your assistant with specific **Instructions** on what you want it to do and how you want it to respond to you. [See example](#).
6. Select the **Model** you wish to use, *gpt-4o* is currently the most advanced (and cheapest) option from OpenAI.
7. Enable **File search**.
8. Select **+ Files** to choose the files this assistant should use to answer questions.
9. Enter your message to your Assistant.
10. Select **Run** to start testing responses.



**i** Unlike the front-end of ChatGPT which is subscription based, running prompts in your Assistant will use "tokens" each time you ask it a question. 1,000 tokens equals about 750 words. GPT-4o, currently the most advanced model, costs \$5.00 for 1 million tokens. More information on pricing can be [found here](#).

**Email:** [jeremy.terhune@gmail.com](mailto:jeremy.terhune@gmail.com) | **LinkedIn:** <https://www.linkedin.com/in/jeremyterhune/> Last Published: May 26th, 2024